

The top half of the image features a modern outdoor lounge area. In the center is a dark brown, textured sofa with a low, rectangular fire pit in front of it. The fire pit contains a fire. The ground is covered in dark grey pebbles. On either side of the sofa are small planters with green plants. In the background, a light grey wall has two vertical, cylindrical light fixtures mounted on it. Above the sofa, a black square contains the white text "OSD NERO".

OSD
NERO

ECLIPSE SERIES

ECLIPSE25 WM | ECLIPSE25 WMS
ECLIPSE25 WM UD | ECLIPSE25 BOLLARD

**OWNER'S
MANUAL**

Introduction

OSD – The Best Value in Sound

Thanks for joining the OSD owners club.

Experience the OSD Nero Eclipse25 series, where inviting LED lighting blends with rich, clear audio. Featuring the Eclipse25 Bollard for enchanting outdoor environments, the versatile Eclipse25 WM Surface Wall Mount and Eclipse25 WM UD Surface Wall Mount with up-down LED, or the sleek Eclipse25 WMS Slim Surface Wall Mount Speaker, each crafted to enhance any space with their harmonious design and pleasing sound.

See additional connection options in this manual to achieve the best performance for your application.

If you have any questions about the Eclipse Series, please contact us directly.

www.osdaudio.com

email: support@osdaudio.com

Phone: 888-779-4968

In The Box

Eclipse25 WM

QR Manual Card	Qty: 1
Eclipse25 WM Speaker/LED Light	Qty: 1
Mounting Bracket	Qty: 1

Eclipse25 WMS

QR Manual Card	Qty: 1
Eclipse25 WMS Speaker/LED Light	Qty: 1
Mounting Bracket	Qty: 1

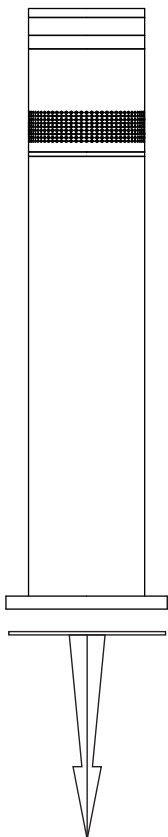
Eclipse25 WM UD

QR Manual Card	Qty: 1
Eclipse25 WM UD Speaker/LED Light	Qty: 1
Mounting Bracket	Qty: 1

Eclipse25 Bollard

QR Manual Card	Qty: 1
Eclipse25 Bollard Speaker/LED Light	Qty: 1
10 in. Mounting Stake	Qty: 1

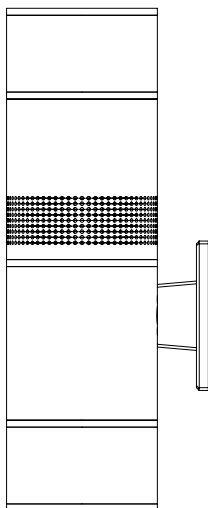
Eclipse25 Bollard



2.5" 70V/80hm Bollard Omni Speaker w/LED Light

- Uniform Dispersion Array
- 1 x 2.5" Full Range Driver
- 8-Ohm Power: 10Watts RMS
- 70V/100V Tap: 10Watt audio
- Dispersion: Horizontal: 360° ,Vertical: 120°
- Frequency Response: 90-18KHz
- Sensitivity: 88dB
- Light Power: 3W (DC12V)
- Color temperature: 3000k
- Lumens: 70
- 10.25" Die Cast Aluminum Install Stake
- Dimensions: (H x W) 800mm x 108mm (152mm Base)
31.5"x 4.25" (6" Base)
- IP 65 Outdoor Rated

Eclipse25 WM UD

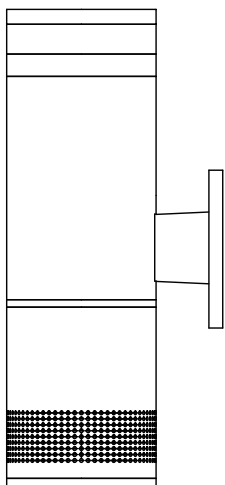


2.5" 70V/80hm Surface Mount Omni Speaker w/ Dual Up-Down LED Light

- Uniform Dispersion Array
- 1 x 2.5" Full Range Driver
- 8-Ohm Power: 10Watts RMS
- 70V/100V Tap: 10Watt audio
- Dispersion: Horizontal: 360° ,Vertical: 120°
- Frequency Response: 150-20KHz
- Sensitivity: 88dB
- Light Power: 10Wx2 (DC12V) In Parallel = 20W Total
- Color temperature: 3000k
- Lumens: 900 Total
- Dimensions: (H x W) 360mm x 108mm 14.17 "x 4.25"
- IP 65 Outdoor Rated

Eclipse25 WM

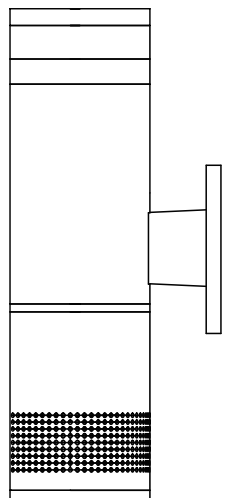
2.5" 70V/80hm Surface Mount Omni Speaker w/ LED Light



- Uniform Dispersion Array
- 1 x 2.5" Full Range Driver
- 8-Ohm Power: 10Watts RMS
- 70V/100V Tap: 10Watt audio
- Dispersion: Horizontal: 360°, Vertical: 120°
- Frequency Response: 90-18KHz
- Sensitivity: 88dB
- Light Power: 3W (DC12V)
- Color temperature: 3000k
- Lumens: 70
- Dimensions: (H x W) 317.5mm x 108mm 12.5"x 4.25"
- IP 65 Outdoor Rated

Eclipse25 WMS SLIM

2.5" 70V/80hm Surface Mount Omni Speaker w/ LED Light



- Uniform Dispersion Array
- 1 x 2.5" Full Range Driver
- 8-Ohm Power: 10Watts RMS
- 70V/100V Tap: 10Watt audio
- Dispersion: Horizontal: 360°, Vertical: 120°
- Frequency Response: 150-18KHz
- Sensitivity: 88dB
- Light Power: 3W (DC12V)
- Color temperature: 3000k
- Lumens: 70
- Dimensions: (H x W) 317.5mm x 89mm 12.5"x 3.5"
- IP 65 Outdoor Rated

LED Lighting Considerations

Note: We do not provide the low voltage transformer. The choice of transformer should be decided by the landscape lighting designer, or if you are installing it yourself, it can be sourced directly online.

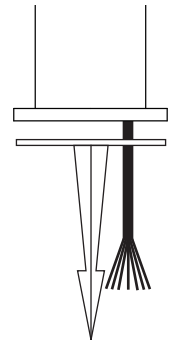
The LED light requires 12 Volts and up to 10 Watts.

The light color or temperature is 3000K, commonly called “Cool,” just above neutral. The maximum light output is 70 lumens, similar to a 25-watt incandescent light bulb. The area of illumination is approx. 1.5’

Red (+) and Black (-) wires are labeled for the 12Volt lighting connection. There are five wires from the Eclipse Speakers and seven in the wiring bundle. These other five wires pertain to the multiple Audio Connection Options (8-ohm/70V/100V). The wire bundle comes from the bottom of the Eclipse25 Bollard and through the Wall mounts of the Eclipse25 WM & Eclipse25 WMS. So, the Black and Red wires go to the 12 Volt Transformer for the LED, and a combination of the five wires connect to the Audio Power/Source.

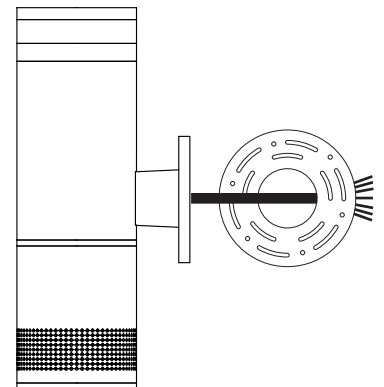
Installing the Eclipse25 Bollard Landscape Speaker/Light Combo.

When installing the Eclipse25 Bollard on the ground, please note there is a 10” Die-cast Aluminum Stake connected to the bottom of the Bollard. You may need to create a starter hole to ensure the stake goes down the full 10 inches, so the bottom plate is flat on the ground once you refill the cavity surrounding the stake.



Installing the Eclipse25 WM, UD & WMS Wall Mount Speaker/Light Combos.

The Eclipse Wall Mounted Speakers with LEDs have the same 7-wire pigtail from the cylinder through the wall mount bracket. A removable round wall mount template first mounts to the wall, and then the Eclipse Speaker/LED mounts to the template. It would be best if you determined where the wall bracket will go. Then, drill a .75” to .875” hole through the center of the template. You will need to run the wire into the hole. You will terminate up to six available wires for the 70V or 100V hookup along with the LED connection. Only four of the seven wires are used for the 8-ohm/LED option. The Red (+) and Black (-) are labeled for the 12Volt LED connection. **Note:** A wire guide is connected to the two-foot wire loom inside the wall mount bracket. Depending on your access, you can terminate the wires before pushing them through the hole or afterward.



When in doubt, consult a landscape lighting designer.

What Gauge Wire for Landscape Lighting and Sound?

There are a couple different options here when it comes to landscape wiring. Luckily, we have some of the most popular choices (White or Black Jacket Option) in stock to help you.

The most popular gauge sizes are 12/2 AWG landscape wire, 14/2 AWG landscape wire, and 16/2 AWG. Our Low Voltage Wire is rated for Direct Burial or above ground. The outer jacket is also CL3-rated for in-wall installation for all residential and most commercial low-voltage applications for both LED lighting and Audio transmission.

When you see these numbers in front of the cable, this tells you the size of the conductors inside the line. Each size performs well for different lengths and watts you need for your installation.

The length in this chart goes up to 120 feet, and the Watts goes up to 120. This gives you great coverage for the majority of your installations. Most cable runs for outdoor landscape lighting will fall into the 12, 14, or 16 AWG category.

Since we covered an overview of landscape wire, let's now get into some more common questions in regard to landscape wiring:

LANDSCAPE WIRING CHART

Watts	10	20	30	40	50	60	70	80	90	100	110	120
40 ft	16	16	16	16	16	16	16	16	16	14	14	12
60 ft	16	16	16	16	16	16	16	16	14	14	14	12
80 ft	16	16	16	16	16	16	14	14	14	14	14	12
100 ft	16	16	16	16	14	14	14	14	14	12	12	12
120 ft	12	12	12	12	12	12	12	12	12	12	12	12

AWG

How Far Can You Run 14 Gauge Landscape Wire?

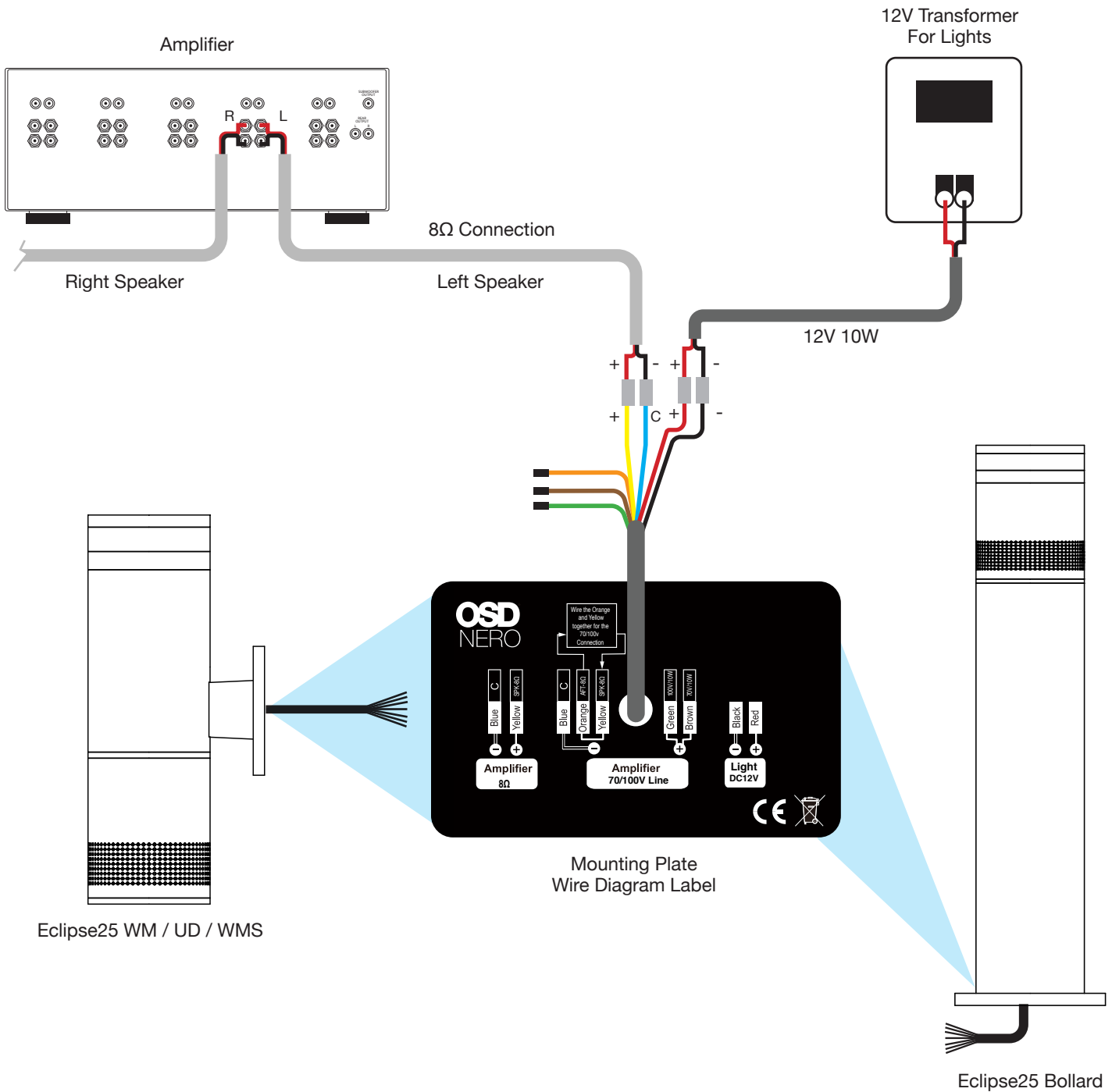
From the above chart, 14AWG landscape wire is recommended for up to 100ft using up to 90 Watts.

Do You Have to bury Landscape Wire?

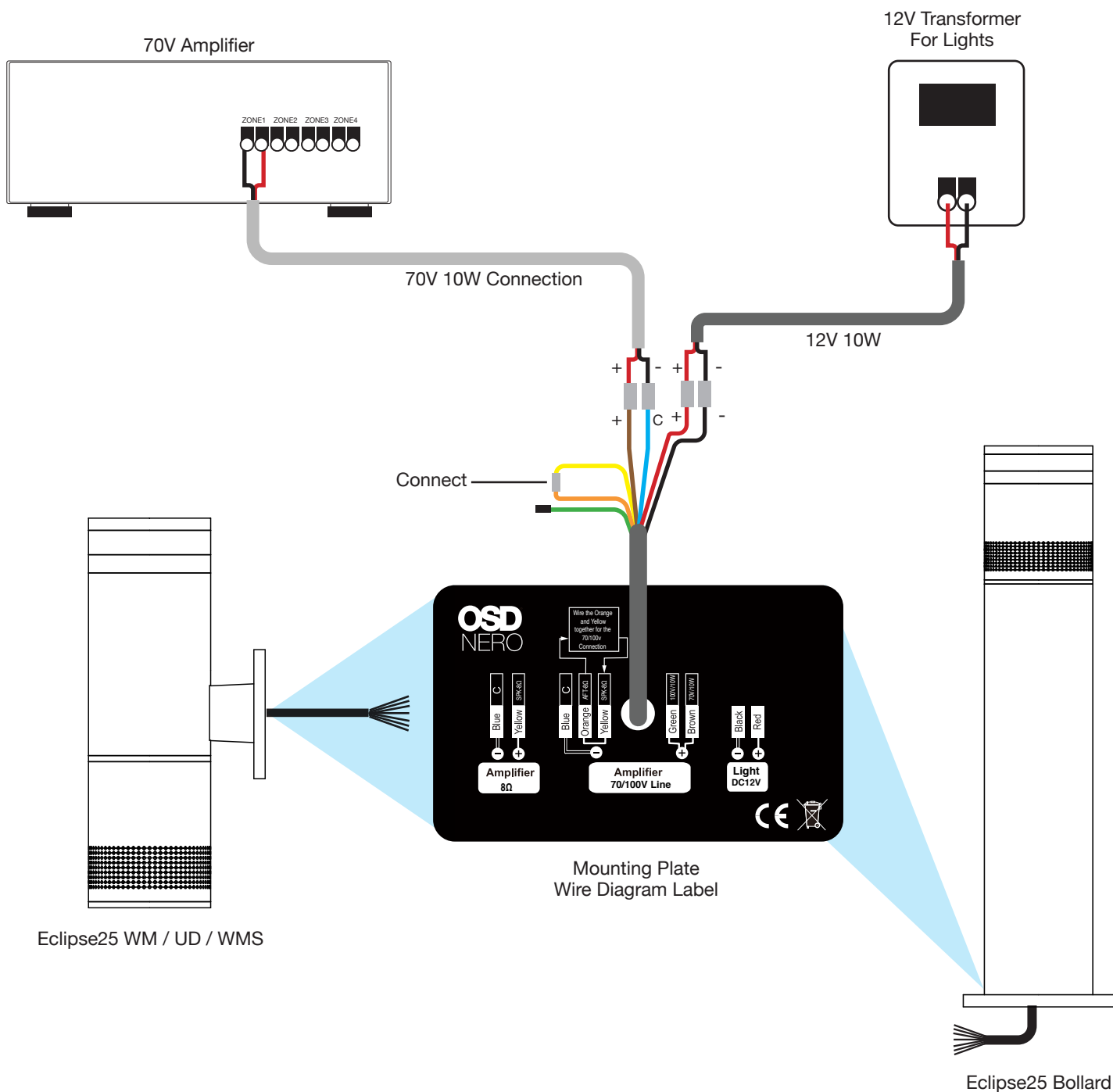
The great thing about landscape wire is that you don't necessarily have to bury it. The cables jacket rating gives it the ability to perform in conditions such as sun and rain. If your landscape wire run requires some exposure that is fine. We do recommend protecting your cable as much as you can whether that is in conduit or under awnings. Most landscape wire is buried out of sight.

8-Ohm Connection W/12V Light

Connect the Yellow(+) and Blue(-) wires to 8-Ohm Amp Single Channel(+/-) Output Connect Red(+) and Black wires to 12Volt Transformer(+/-) Output for the Light Cut/Tape Off Orange (70V Loop), Brown (70V +) and Green (100V +) wires

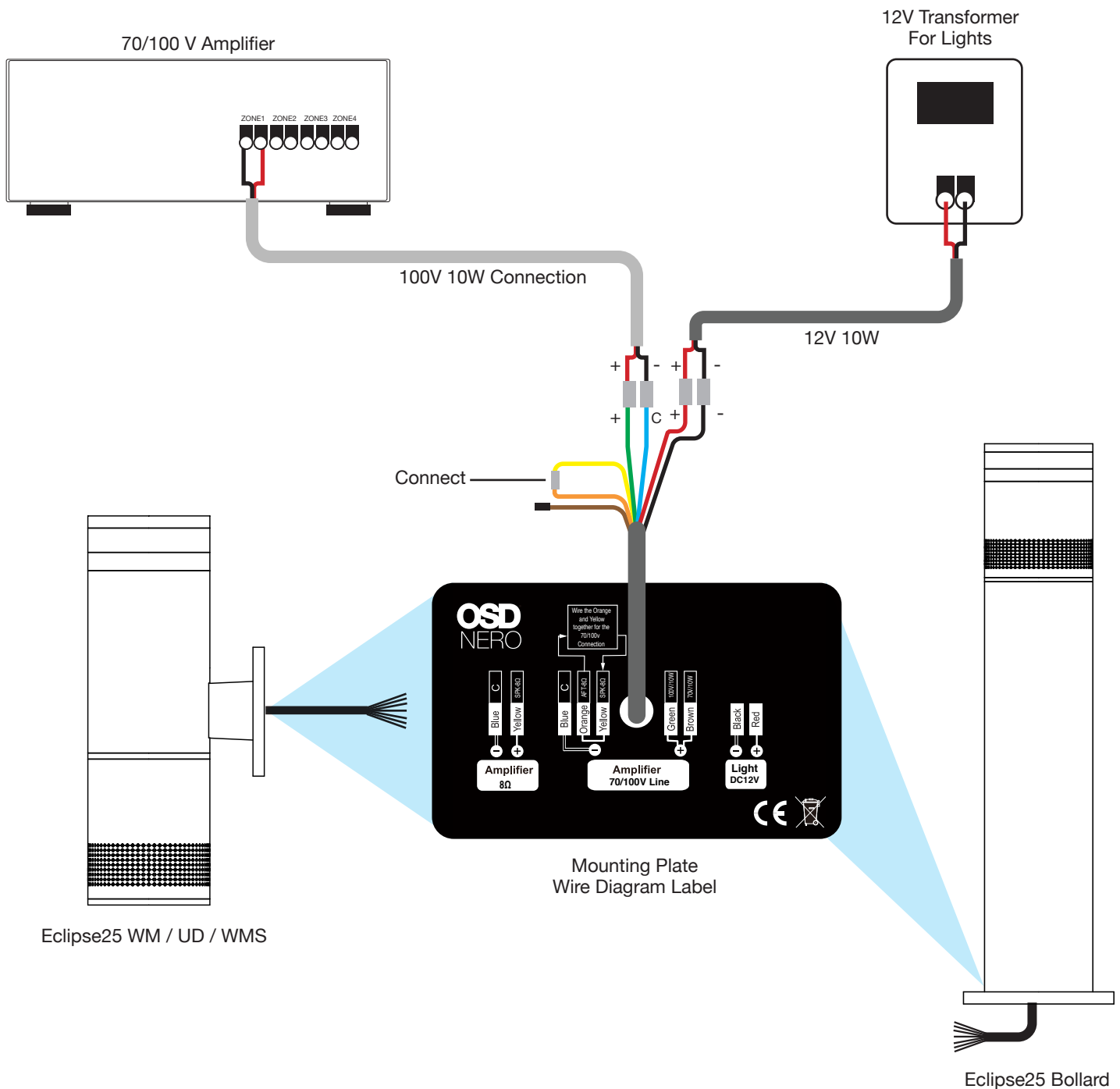


Connect the Brown (70V+) and Blue(-) wires to 70V AMP(+) and Com(-) Connections Connect Red(+) and Black wires to 12Volt Transformer(+/-) Output for the Light Connect the Yellow(+) and Orange (100V loop) wires together Cut/Tape Off Green (100V+) wire not used



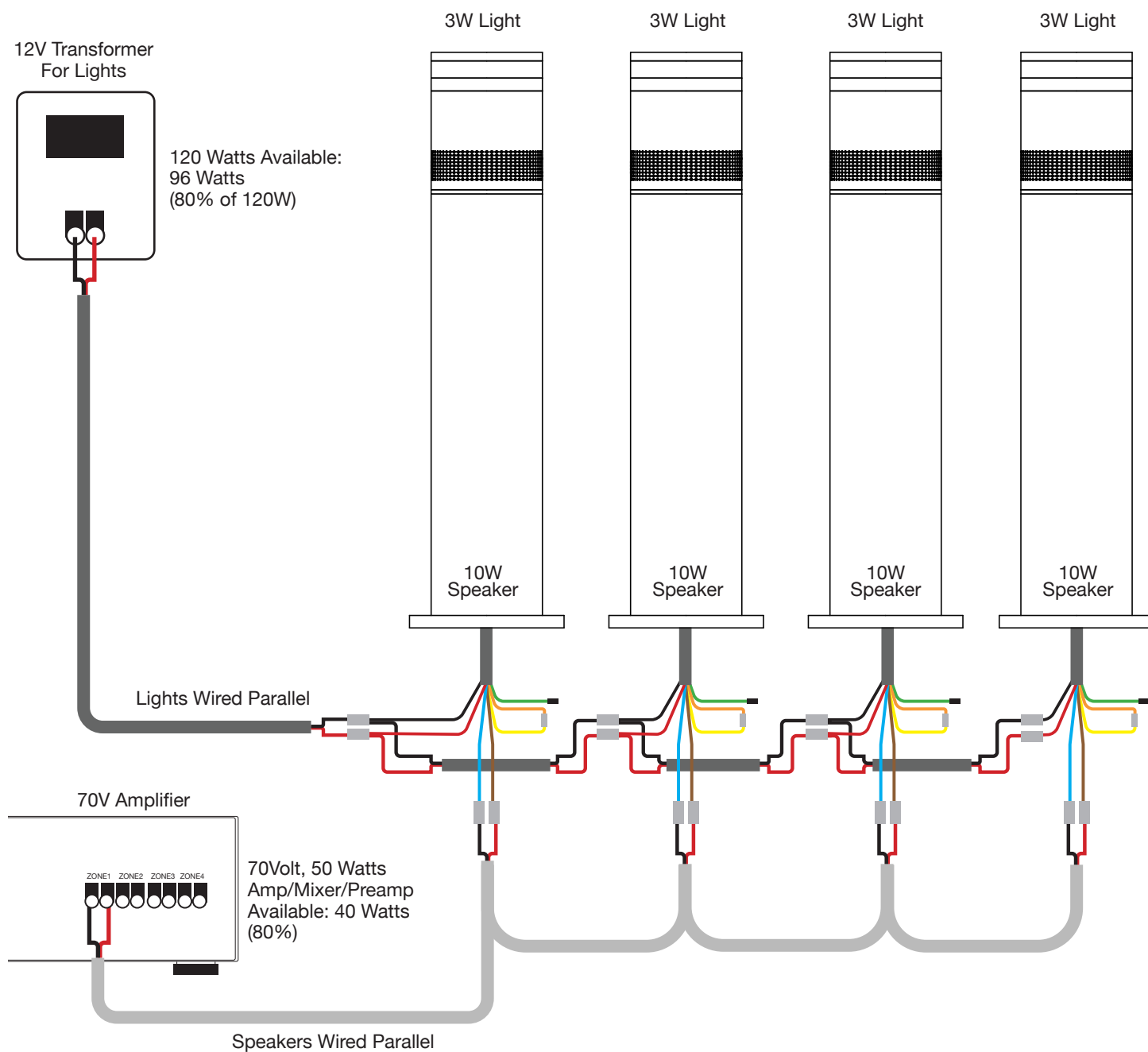
100V Connection W/12V Light

Connect the Green (100V+) and Blue H wires to 100V AMP(+) and Com H Connections Connect Red(+) and Black wires to 12Vott Transformer(+/-) Output for the Light Connect the Yellow(+) and Orange (100V Loop) wires together Cut/Tape Off Brown (70V+) wire not used

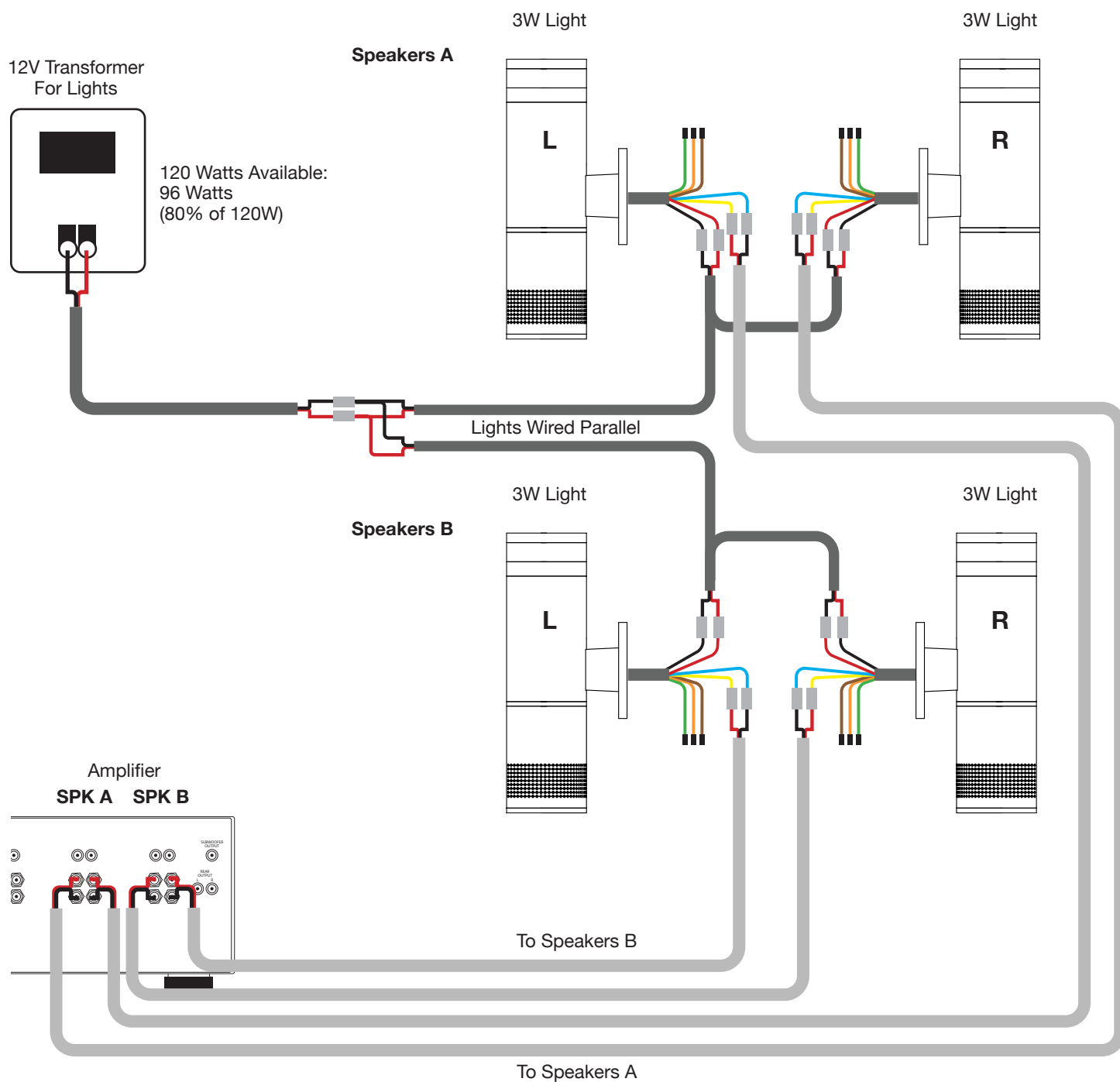


Eclipse25 Bollard - 70 Volt, 10Watts x 4 Speakers + 40W of 50W

Sample System Diagram



Sample System Diagram





Warranty Info

All OSD NERO Eclipse25 Outdoor Speaker products have a (3) year Limited Warranty against defects in materials and workmanship. Proof of purchase must accompany all claims. During the warranty period OSD AUDIO will replace any defective part and correct any defect in workmanship without charge for either parts or labor. OSD AUDIO may replace returned speakers with a product of equal value and performance. In such cases, some modification to the mounting may be necessary and are not OSD AUDIO's responsibility.

For this warranty to apply, the unit must be installed and used according to its written instructions. If necessary, repairs must be performed by OSD AUDIO. The unit must be returned to OSD AUDIO at the owner's expense and with prior written permission. Accidental damage and shipping damage are not considered defects, nor is damage resulting from abuse or from servicing performed by an agency or person not specifically authorized in writing by OSD Audio.

OSD AUDIO sells products only through authorized dealers and distributors to ensure that customers obtain proper support and service. Any OSD AUDIO product purchased from an unauthorized dealer or other source, including retailers, mail order dealers and on-line sellers will not be honored or serviced under existing OSD AUDIO warranty policy. Any sale of product by an unauthorized source or other manner not authorized by OSD AUDIO shall void the warranty on the applicable product.

Damage to or destruction of components due to application of excessive power voids the warranty on those parts. In these cases, repairs will be made on the basis of the retail value of the parts and labor. To return for repairs, you must email customer service at RMA@audiogeargroup.com for a Returned Merchandise Authorization (RMA) number# then the unit must be shipped to OSD AUDIO at the owner's expense, along with a note explaining the nature of service required. Be sure to pack the unit(s) in a corrugated container with at least 3 inches of resilient material to protect the unit from damage in transit.

This Warranty Does Not Cover:

Damage caused by abuse, accident, misuse, negligence, or improper operation (installation) • Any products that have been altered or modified • Any product whose identifying number of decal, serial #, etc. has been altered, defaced or removed • Normal wear and maintenance.